

## The Elizabeth Reller Memorial Scholarship Fund

This fund will provide a source of low cost student loans to Beardstown High School graduates pursuing post-secondary education.

To be eligible, individuals must meet the following criteria:

- Must be a graduate of Beardstown High School.
- Must be pursuing post-secondary education.
- Must show financial need.
- Must be goal oriented and/or making substantial progress.

Loans may be used for payment for the following:

- Tuition and fees
- Room and board
- Books and other supplies
- Transportation, if commuting.

*How to Apply*



For an Application or More  
Information, contact:

➔ Beardstown High School  
200 E. 15th St.  
Beardstown, IL 62618  
217-323-3665

➔ First National Bank of  
Beardstown,  
Trust Department  
300 Washington Street,  
Beardstown, IL 62618  
217-323-4105

## The Elizabeth Reller Memorial Scholarship Fund

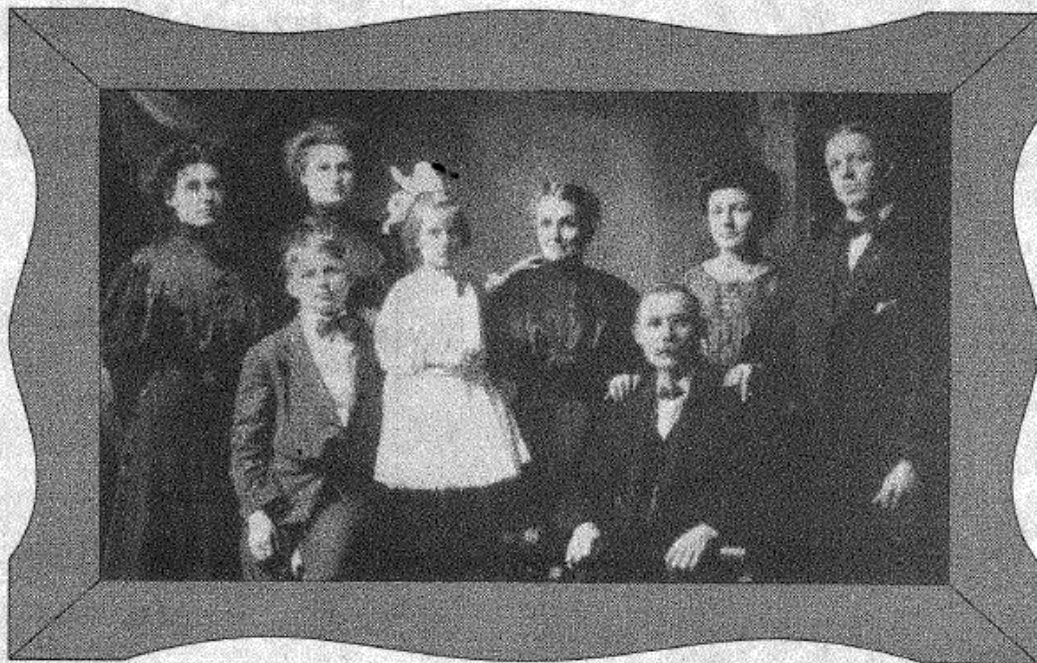
Endowed by  
Erna Reller Owens and  
Hazel Reller Kithe

in Memory of  
Their Mother



For  
Graduates of  
Beardstown High School

Sisters, Erna Reller Owens and Hazel Reller Kitke, believed so strongly in the value of education they have provided for their estates to be put into a trust to grant low interest student loans. They named the trust in honor of their mother—Elizabeth Pauk Reller.



*Back Row, L to R: Julia Reller DeSollar, Erna Reller, Elizabeth Pauk Reller, Anna Reller Broeker, Alfred Reller. Front Row, L to R: Elmer Reller, Hazel Reller Kitke, Clamor Reller.*

Erna Reller Owens graduated from Beardstown High School in 1905. In 1911 she graduated from the University of Illinois. This was accomplished in three years. While there, she was inducted into the National Honor Society Phi Beta Kappa.

Mrs. Owens began her teaching career in Decatur, Illinois. She taught at the rural Beardstown Edgewood School, and was principal at Averyville, and Maroa, Illinois. Erna then moved to Cicero, Illinois where she taught for 29

years at J.S. Morton High School as an English teacher.

It was after her retirement that Erna Reller Owens moved back to her childhood home in Beardstown.

Hazel Reller Kitke graduated from Beardstown High School in 1920. She attended Normal Teachers College in Normal, Illinois (presently Illinois State University) and had a short teaching career at Beard School in Beardstown, Illinois before she married and moved out of state.



## Elizabeth Pauk Reller

Elizabeth Pauk Reller was born and raised in Beardstown, Illinois. She and her German born husband, Clamor Reller, instilled upon their family to have a solid work ethic whatever their profession. Mrs. Reller was a dressmaker and Mr. Reller was a carpenter.

Mrs. Reller impressed the value of an education in all of their six children: Anna Reller Broeker, Alfred Henry Reller, Julia Reller DeSollar, Erna Reller Owens, Elmer Reller and Hazel Reller Kitke.

To honor their mother and the benefit of education she conveyed to them, two of Elizabeth Reller's daughters, Erna Reller Owens and Hazel Reller Kitke, have established the Elizabeth Pauk Reller Trust to help educate students who graduate from Beardstown High School, Beardstown, Illinois.